

W8IO – 810 and 810-065 Roof Mount Tower Assembly and Installation

4 Dec 2015

Please carefully follow these steps to properly assemble and install your 8 foot roof mount tower.

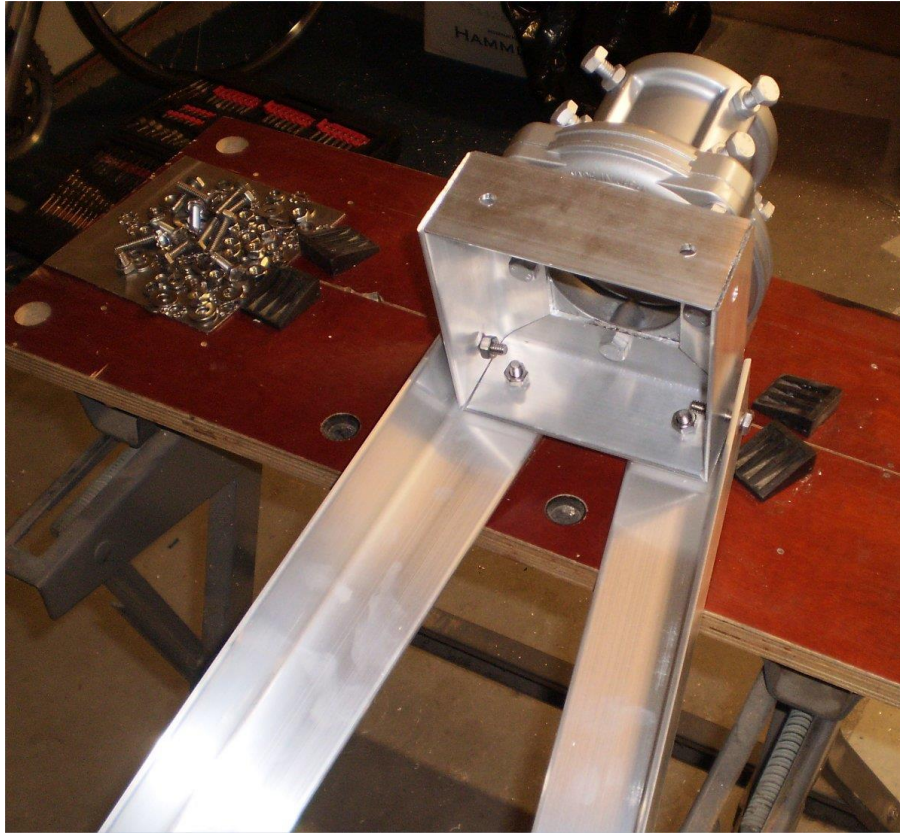
1. Remove all items from the packages and make sure all parts are there. Refer to the parts list at the end of this manual. Model IO-810-065 includes the Yaesu GS-065 Thrust Bearing. Model IO-810 does not.
2. Begin by assembling the 4 top angle brackets to the bottom of the Yaesu GS-065 thrust bearing or Glen Martin MC-10, using the 4 bolts and 4 lock-washers supplied with the bearing or mast adapter. Save the other parts for future use if you wish to eventually re-purpose the thrust bearing. Tighten all bolts securely, leaving equally spaced gaps at each corner.



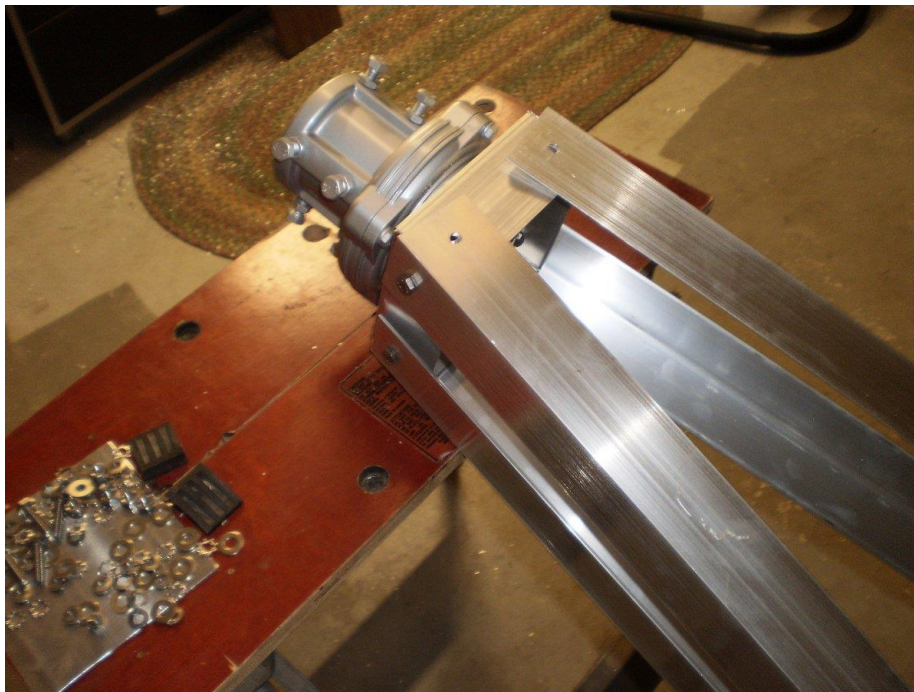
3. Assemble a right leg, a left leg, top shelf bracket (without rotor shelf mounting holes), bottom shelf bracket and 2 cross braces together as shown below, using 5 each of the 1/4-20 x 1" bolts, lock-washers and nuts. I recommend placing the 2 legs on a flat surface such as a garage floor, with the four 1/4 inch bolts pointing up. Assemble the cross braces together with the center bolt, then place the cross brace assembly down onto the bolts. Place the top and bottom shelf brackets onto the bolts, then hand-tighten the nuts with lockwashers. The legs should have the feet attachment holes facing the floor.



4. Attach the leg assembly to the top angle bracket assembly as shown below using 4 each of the 1/4"-20 x 3/4" bolts, lock-washers and nuts. Hand-tighten the hardware at this time.



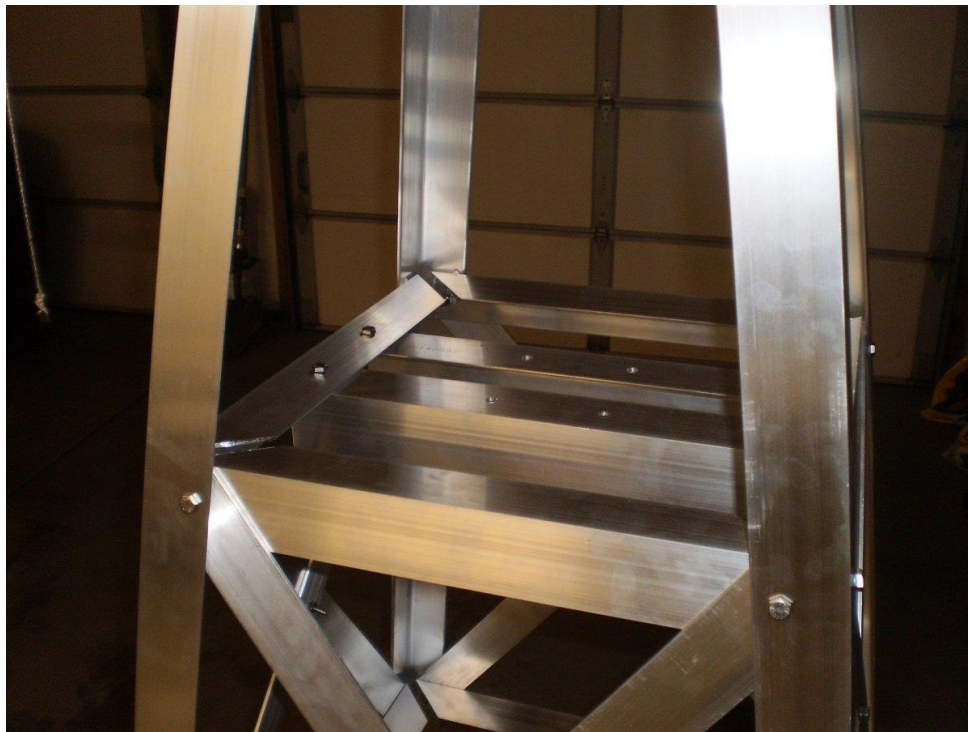
5. Assemble a second leg assembly identical to the one assembled in Step 3. Lay this assembly on top of the first leg assembly. The feet attachment holes should be facing up. Attach to the top assembly as shown below. Use 4 each 1/4"-20 x 3/4" bolts, lock-washers and nuts. Hand-tighten the hardware at this time.



6. Tilt the assembled structure upright and spread the legs apart by about 32 inches (similar to unfolding a step ladder). Assemble the cross braces, upper shelf bracket (with rotor shelf mounting holes) and lower shelf bracket on each of the 2 open sides as shown below, using $\frac{1}{4}$ "-20 x 1" bolts, lock-washers and nuts. Hand-tighten the hardware at this time.



7. Attach the 2 rotor shelves to 2 of the upper shelf brackets with 4 each $\frac{1}{4}$ "-20 x 1" bolts, lock-washers and nuts as shown below. Verify that all rotor mounting holes are 3.31" (Yaesu) or 3.0" (Hy-Gain) or 2.5" (MC-10) apart, then tighten these bolts securely.



8. Attach a foot on each leg with 5/16"-18 x 1" bolts, lock-washers and nuts as shown below. Hand-tighten the hardware at this time.



9. Make sure that the tower is on a level surface. Place a level across the top of the thrust bearing, then tighten the 8 bolts that hold the top angle brackets to the 4 legs. There will be a small gap between the legs and the top brackets even when tight. Make sure that the thrust bearing AND rotor shelves are both level in 2 orthogonal directions. Securely tighten the remainder of the hardware at this time except for the bolts that hold the feet.

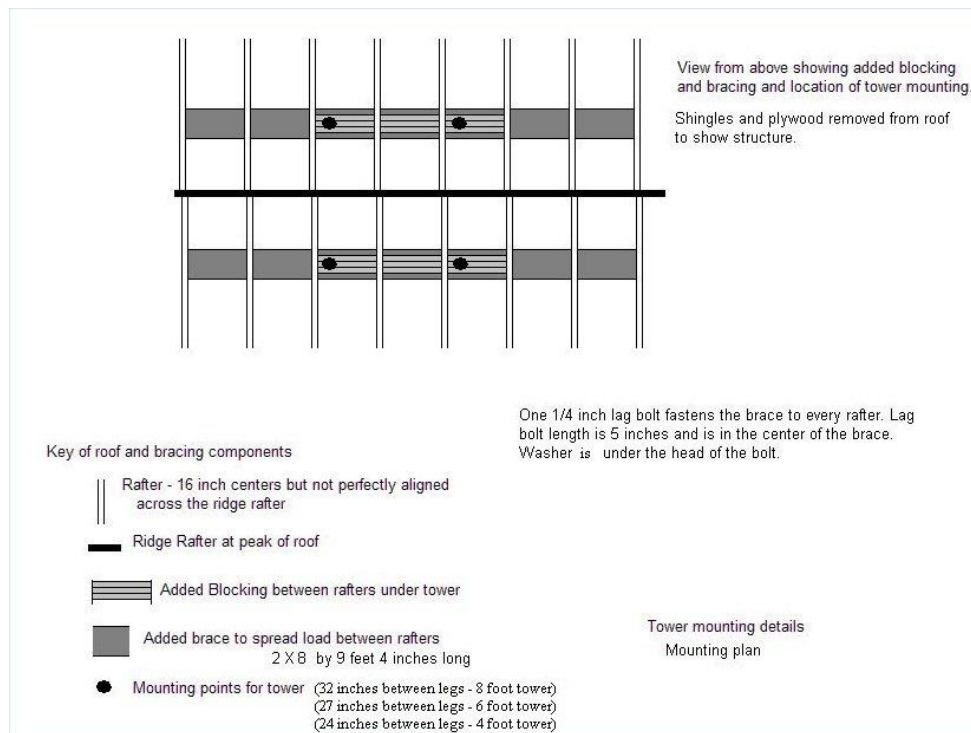
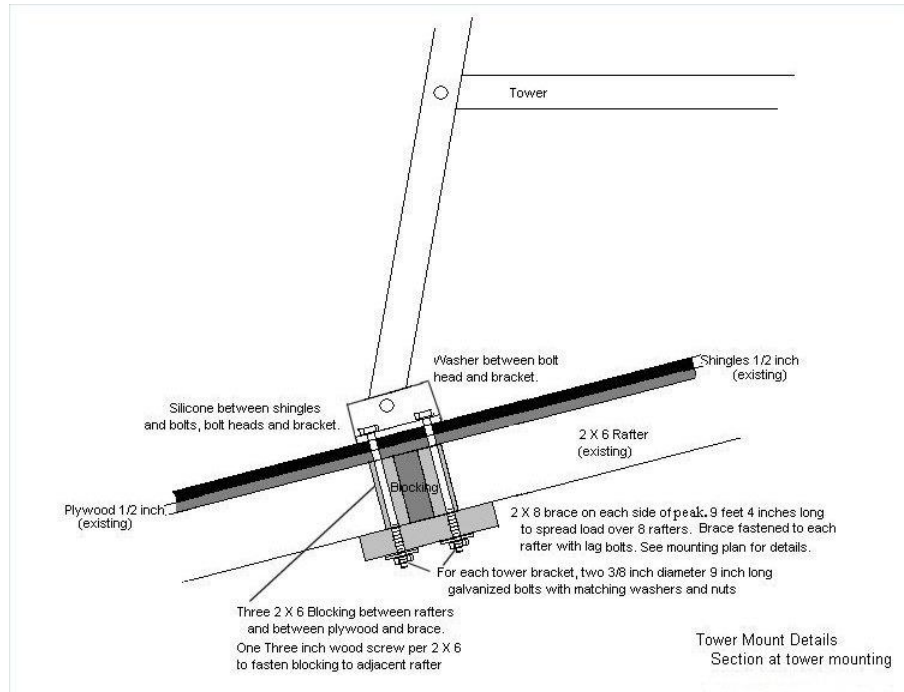


Installation

10. Install the rotor and mast to make sure everything fits and aligns with the thrust bearing. You can decide at this time if you wish to secure the rotor onto the rotor shelf before or after placing the tower on the roof.

11. You will need to determine how you wish to attach the tower to your roof. Either lag screws or bolts may be used. Bolts are recommended. The feet mounting holes are drilled to accept 3/8" bolts. These may need to be enlarged if larger bolts are used.

12. Below you can view recommended mounting procedures for a sloped roof with asphalt shingles. Other mounting methods may be used depending on your particular roof.



IO-810 Parts List (per tower)

Right Leg (2" x 2" x 96")	2	Upper shelf bracket drilled (2" x 2" x 15.5")	2
Left Leg (2" x 2" x 96")	2	Upper shelf bracket (2" x 2" x 15.5")	2
Top angle bracket (2" x 2" x 5")	4	Lower shelf bracket (2" x 2" x 22")	4
Rotor shelf – square edges (2" x 2" x 15.5")	2	Cross braces (2" x 30")	8
Tower foot – square edges (2" x 2" x 6")	4	Yaesu GS-065 with hardware (IO-810-065 only)	1
¼"-20 x 1" SS bolt	24	¼" split lock-washer SS	32
¼"-20 x ¾" SS bolt	8	¼"-20 nut SS	32
5/16"-18 x 1" SS bolt	4	5/16" split lock-washer SS	4
5/16"-18 nut SS	4		